

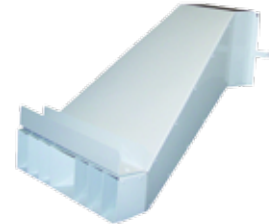
Climate Control

Direct Fired Propane Tent Heaters

Extend Your Rental Season!



White Duct & Duct Diffuser



Heat Diffuser Only

Specifications	THC-85	THC-175
Fuel Consumption	3.8 lbs./hr	8 lbs./hr
Ignition System	Direct Spark	Direct Spark
BTU/HR	85,000	175,000
Heated Air Output	450 CFM	1,200 CFM
Power Requirements	115V/60Hz/1PH/15Amp	115V/60Hz/1PH/15Amp
Thermostat	20' Cord for remote location	20' Cord for remote location
Net Weight	135 lbs.	193 lbs.
Dimensions	30" x 16" x 22"	30.6" x 18.25" x 31.12"

Product Code	Description
THC-85P	85,000 BTU Propane Heater
THC-175P	175,000 BTU Propane Heater
Heater Accessories	
THCP-WD12	12" x 10' White Duct
THCP-DD	Duct Diffuser
THCP-HD85	THC-85 Heater Diffuser
THCP-HD175	THC-175 Heater Diffuser

Approvals: cWHus, ETL



Indirect Fired Propane Heater

Features:

- BTU/HR: 395,000
- Fuel Consumption: 18.5 lbs./hr
- Dimensions: 70" x 24" x 47"
- Fan Motor: 3/4 HP@1,725 rpm 2,500 cfm
- Ignition: Direct Spark
- Air Outlet: Two 12" or One 16" (W/16" faceplate purchase)
- Wheels: Two 16" Pneumatic Wheels
- Power Req.: 115V/60Hz/1Ph/15Amp
- Weight: 365 lbs.
- Approvals: cWHus, ETL



Ductwork Available!

Description	Product Code
395,000 BTU Heater	FVP-400
12" x 15' Ducting	FV-D12
16" x 15' Ducting	FV-D16
16" Face Place	FV-434A

Incredible 395,000 BTU Output!

Tent Event 125 Heater

Certified For Use Inside Event Tents!

Features:

- Generous 125,000 BTU Output; Enough to heat a 40' X 60' X 10' Commercial Tent
- 1,000 CFM blower provides gentle heat
- Absolutely no ductwork required
- Includes Integral thermostatic control & electric ignition with lighted On/Off switch
- Durable powder coated steel base and high density white or black polymer top



Although the Tent Event 125 is certified for use inside event tents, we do offer Ductwork and Diffusers for occasions that require the heater to be located outside of the tent. Please call for accessory pricing.

Description	Product Code
Tent Event 125 (Black Top)	TB117
Tent Event 125 (White Top)	TB116

18" Mountable Fan

Our Mountable fan is perfect for circulating air within tents. Use in the winter to circulate air from heating devices and use in the summer for direct cooling.



Features:

- CFM: 2,196
- RPM: 1,548
- Fan guard dia. 20"
- Fan depth: 7"
- Amp Draw: .78 amps
- Cord: 7' grounded plug
- HP: 1/8, single speed
- Std. Clamp fits: 1 3/4" – 3 1/2" O.D. Round Pole
- Weight: 15 lbs., not including the clamp



Optional Twin Tube Clamp

Description
18" White Fan W/Std. Clamp
18" White Fan W/Twin Tube Clamp

Evaporative Spot Cooler



- Two-speed, quiet blower moves air up to 100'
- Cools the temperature of the air leaving the unit up to 20 degrees F.
- High efficiency evaporative cooling pads on all four sides
- High impact ABS plastic with U.V. protection
- Low operating cost - less than 50 cents a day!
- Includes Oscillating top for greater flexibility
- Water Conditioner Tabs and Cleaner Sold Separately



Description	Product Code
1/3 HP, 14 Gallon Oscillating Way Cool	WC-1/3HP-OSC
1 HP, 24 Gallon Oscillating Way Cool	WC-1HP-MF-OSC
Water Conditioner Tabs/Box 10	WC-CTAB
WayCool Cleaner/Case 12 pints	WC-CLNR